

Instructions to install Oki C8600 / C8800 Printer EPROM with Transfer Paper Settings

1. Install Oki Factory C8600 / C8800 Printer Driver supplied with the printer onto your computer.
2. Connect the printer and your computer using a USB cable.
3. Unzip (decompress) the Download tool supplied with these instructions (Figure 1.) Create a new folder on your desktop named "Download tool v02." To unzip the Download Tool left mouse click on the Download tool icon and select the "extract to a folder and pick the new folder you just created. Depending on your

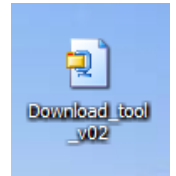


Figure 1

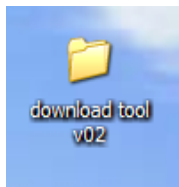


Figure 2

routine (Figure 2.)

version of Unzip™ you may be able to left mouse click and extract directly to a folder of the same name as the file. Either way you need to uncompress the file so that you may use it. When Unzipped the files will be in the folder you named or a folder Download_tool_v02 named by the unzip

4. Open the folder and you will see four files, (a) OKI DPrint, (b) DPrint.dll, (c) DPrint.config and (d) New_Media_test_v01.pjl. Locate the file named OKI DPrint and double click on that file.

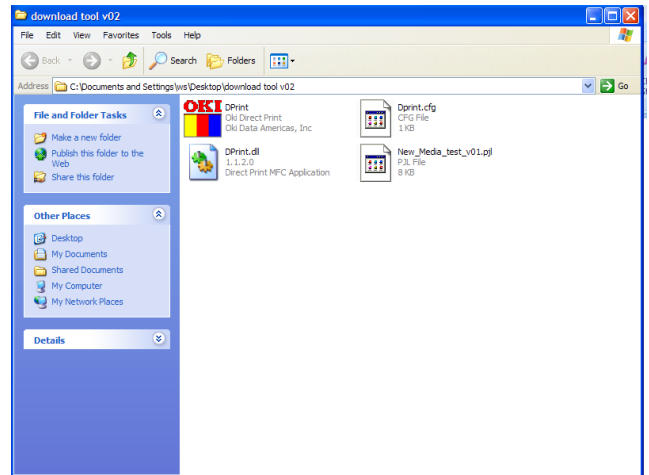


Figure 3

5. This will bring up a window called OKI Direct Print (below.) Select the OKI C8600 on the USB your printer is on from selection 2 in the box. Then click the number 3. Print button" and wait for file to up load to the printer. During this time you will see activity on the printer screen

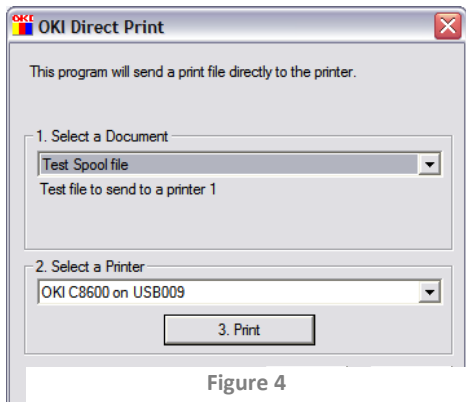


Figure 4

and that is normal as the files are uploaded to the printer from your computer. The printer will automatically reboot when the process is over.

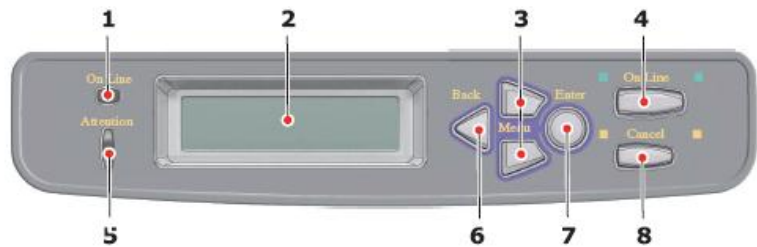
Note: Never perform additional updates to printer as it will remove these settings and return the printer to it' normal factory settings. These new settings you have just entered will allow you to use the printer for normal office use as well as the new heat transfer paper setting.

6. Next you must go to the Printers' operating panel to access the System Configuration menu functions. You will need to consult the Oki C8600 / C8800 User Guide packed with your printer for full instructions on accessing the user modes through the Operator Panel. The changes you are going to make here will insure good transfer quality and you will save them so that they will remain resident in the printer memory for the future.

MENU FUNCTIONS

This section lists the menus accessed via the controls on the printer's operator panel and displayed in the LCD window.

OPERATOR PANEL:



1. System Configuration Menu:

- **Turn Off Jam Recovery**

1. ONLINE LED	ON: Ready to receive data. Blinking: Processing data. OFF: Offline.	2. DISPLAY	Displays the printer status and any error messages.
3. MENU Button	Enters the Menu mode. In Menu mode, forwards or reverses the menu item displayed. Press for 2 secs. or longer to fast forward or reverse.	4. ONLINE Button	Switches between ONLINE and OFFLINE. Exits the menu and goes ONLINE when pressed in the Menu mode. Forces printing on the paper currently loaded when pressed with "WRONG PAPER" or "WRONG PAPER SIZE" displayed.
5. ATTENTION LED	On: A warning occurs. Printing is possible. Blinking: An error occurs. Printing not possible. Off: Normal condition.	6. BACK Button	Returns to the previous higher level menu item.
7. ENTER Button	In the ONLINE or OFFLINE mode: enters the Menu mode. In the Menu mode: determines the setting selected.	8. CANCEL Button	Deletes the data being printed or received when pressed for two seconds or longer. Deletes the data when pressed for two seconds or longer with WRONG PAPER SIZE, RUN OUT OF PAPER, TRAY 1 IS OPEN, or TRAY 1 IS NOT FOUND is displayed.

- You will need to access the System Configuration Menu by pressing the menu button 6 times and press enter button to select. **Turn off Jam Recovery and save the setting.** If jam Recovery is left on, the printer will attempt to reprint any transfer prints or pages lost due to a paper jam, once the jam has been cleared. This is just not practical for heat transfer printing and it may attempt to duplicate errors. So do it now and remember to save the setting.
- You have now completed the printer adjustments and can print your first copy. The Windows Print Driver is your last stop in the process of adapting your Oki C8600 / C8800 printer for heat transfer operation. You must adjust the driver as follows:

Setup Tab (figure5)

- Set the size of the paper you intend to use in the size window.
- Set the Source to **Multi purpose Tray**. That is the feed tray you pull down in the front of the printer.
- Set Weight to **User Type 2**.
- If you choose to print letter, legal or A4 size with the 1 Step HiTemp Plus transfer paper with the strip, click on "Paper Feed Options" and de select "Long Edge Feed" as the paper feeds strip first, which is short edge. For all other papers and sizes, no need to process this option.

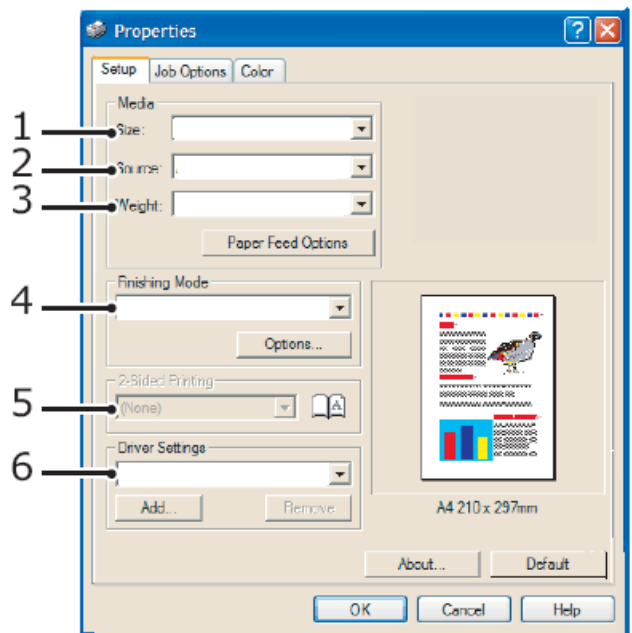
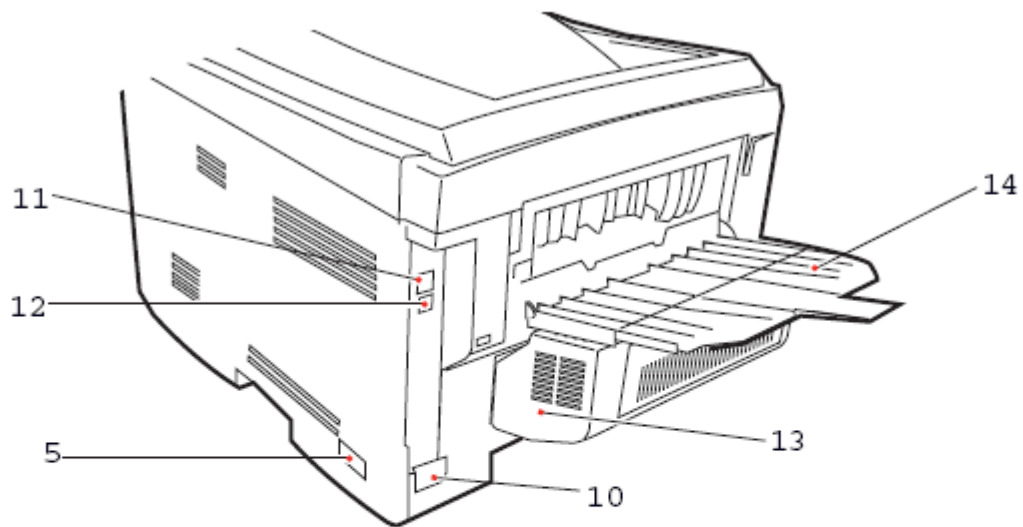


Figure 5

- Leave the Standard/N up setting.
- Leave at none since you will only be printing one side of the paper.
- This is where you will save your printer properties when you have changed the balance of the print drier settings. You will do click the Add button and name the settings to the name of your choice, but recommend identifying size.

At this point you are ready to print. Remember you want to **use the Rear face feed (number 14) Stacker** for the printing and production of heat transfers. This will give the transfer paper a clear paper path and minimize scratching which might occur if the normal paper path is used.



5. ON/OFF switch.

10. AC power socket.

11. USB interface.

12. Network interface.*

13. Duplex unit (when fitted).

14. Rear, face up, 100 sheet
stacker.